

Start here!

Park near the Red Lion on the main east-west street of Newbrough. (NY874678)

The Red Lion houses the **Stanegate Centre** featuring the history, stories and legends from the Newbrough area.

You are on a roman road, the **Stanegate**, built in AD71 and forming the frontier of the Empire before Hadrian's Wall was built. You will need to look hard for the Roman legacy but the prominent visual impact is a Victorian one, principally the Town Hall (1876) and Mechanics Institute (1854).

Walk past the Red Lion on your left, cross the road junction and on your left you will find Newbrough's 1889 Victorian stand pump

① Stand pumps were a feature of late Victorian efforts to eradicate water-borne disease. The cholera epidemics of the 1830s to 1860s decimated town populations, including Newcastle and Sunderland. A clean source of water was vital. This was before big reservoirs were built, so local underground sources were connected to provide the high pressure needed for the pipes leading to the pumps. The Newbrough pump is dedicated to the 'Pelican Band' but perhaps their charity underestimated the flow in dry weather: there is a hand pump 40m east from the stand pump.



Retrace your steps and walk through the village, past the Town Hall and the War Memorial on your right until you reach Newbrough Burn. Cross the bridge (built in 1839) and take the footpath on your left to Allerwash Mill and Allerwash. Follow the path alongside the Newbrough Burn.

Newbrough Burn through Crow Wood must have run polluted and coloured for decades during the height of mining and before sanitation was improved (note the east bank is called Sewage Wood).

← Continued on inside spread

Walking the Newbrough Water Trail

Despite its small size and rural location Newbrough has been linked to the life-giving Burn and 'holy' springs and wells for more than two millennia.

We invite you to visit our village and take the tour, starting and finishing at our pub, the Red Lion (where you're not restricted to water!).

The trail is about two miles; an easy walk on pavements and public footpaths; please be safe and respect our land, property and of course pure water!

How to find us (postcode for sat navs NE47 5AR)



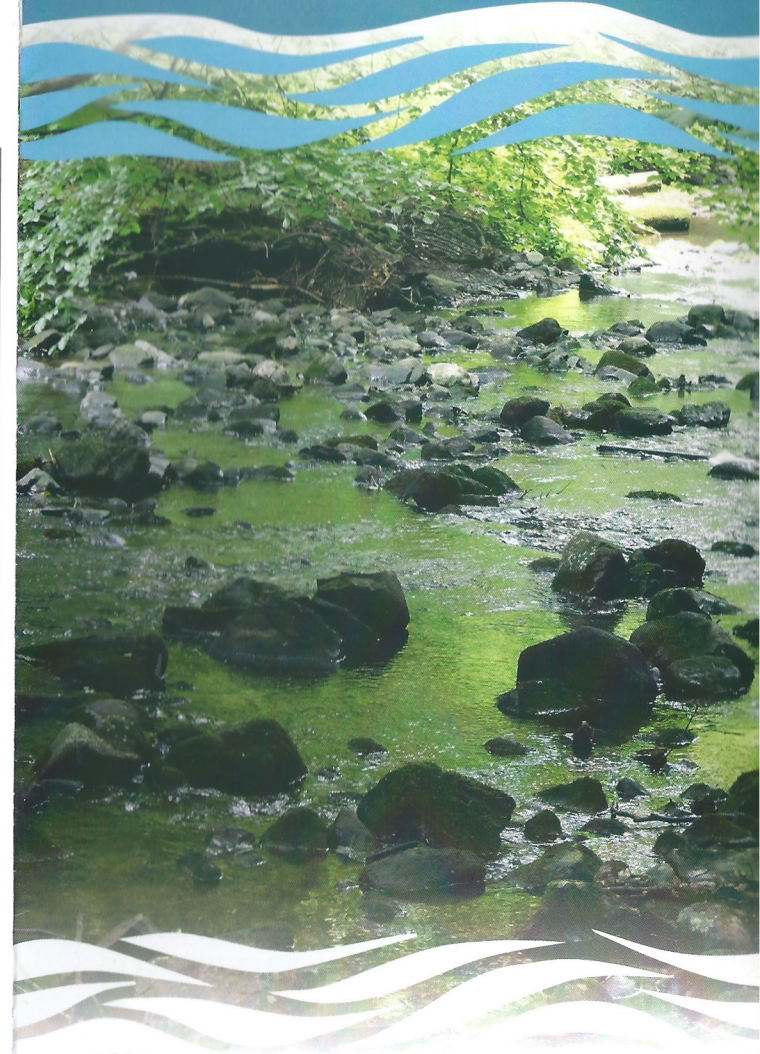
The Newbrough Water Trail is sponsored by Tynedale Lions Club as part of our Centennial Celebration marking 100 years of Lions serving our communities.
www.tynedalelionsclub.org


Tyne Rivers Trust

Adopting and improving streams like Newbrough Burn with massive help from volunteers and the community. If you wish to contribute, contact info@tyneriverstrust.org.



Newbrough Water Trail



*Go with the flow
Get in the know!*



Allerwash Mill weir

More recently, unsuccessful attempts to reduce the **weir** (a Victorian structure supplying Allerwash Mill) ② by explosives led to an increased energy of flow upstream and severe bank erosion; this is now held in check by 'green engineering' (felled logs etc. carried out by Tyne Rivers Trust with the active cooperation of the landowners).

In 2011 the UK Government made funds available to Rivers Trusts for 'river restoration', mainly to help return 'barren' waters to good fisheries. Newbrough Burn was selected as a national priority, given the astounding recovery of the Tyne salmon fishery in the late 20th Century. Tyne Rivers Trust and its contractors carried out extensive but creative use of the damaged Victorian weir stonework to improve fish passage and 'seeded' the Burn with salmon fry hatched in the classroom at Newbrough School. The Burn is now regularly sampled for its fish and 'bug' numbers and continues to improve.

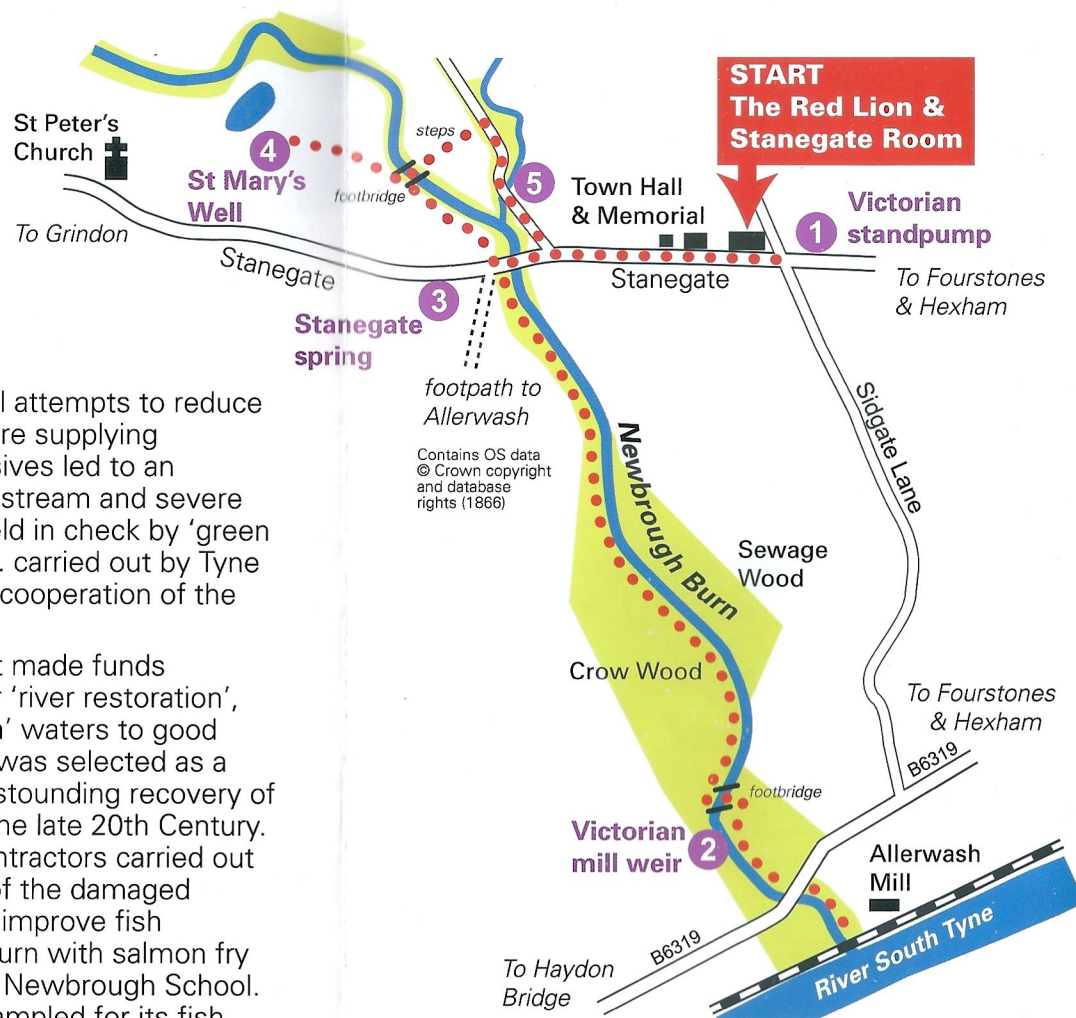
The path meets the B6319, cross carefully and follow the path past Allerwash Mill and where the burn meets the River South Tyne and the Tyne River Trail.

Retrace your steps along the burn to the road and stone bridge in Newbrough. Turn left at the road and note the Stanegate spring.

③ **Stanegate spring** is a small sunken monument that houses the refreshing water used for centuries by travellers between Hexham and Carlisle. For safety reasons it has been barred off but listen to the gurgling of the waters in wet weather!

Walk back towards the bridge and take the path on the left into the woods and along the burn. Before crossing footbridge across the burn, head up the hill to St Mary's Well.

④ **St Mary's Well** was used by Roman travellers on the Stanegate and possibly by occupants of a 'fortlet' (small camp) excavated in 1930 after a coin of Constantine The Great was found nearby. It is possible that the name was given after two nuns 'managed' the well in the early 1600s. The county history refers to its curative properties. In 1823, A.B.Wright's History of Hexham says the Well, 'has the virtue of affording a constant supply of cool, clear and



Ancient church pond just above St Mary's Well

delightful water'. There was a bath below the water source but all is now overgrown (excellent wetland plants flourish where once humans found cures!).

At the top of the bank there is a pretty view towards St Peter's Church and a pond.

The Stonecroft mine to the north is now flooded and excess water drains down the east bank of Newbrough Burn just downstream of the footbridge. Part of the drainage allows a buried gravitational feed to the pond just NW of St Mary's Well.

Walk back down towards the burn, cross the footbridge, up the steps to the lane, turn right.

As you pass the ford (or in flood the footbridge) note the **logs** fixed to the streambed to ease the upstream migration of our restored salmon and sea trout fishery across the smooth concrete base. ⑤

Make your way to the Stanegate and turn left back to the Red Lion.



Salmon ladder on Newbrough Burn